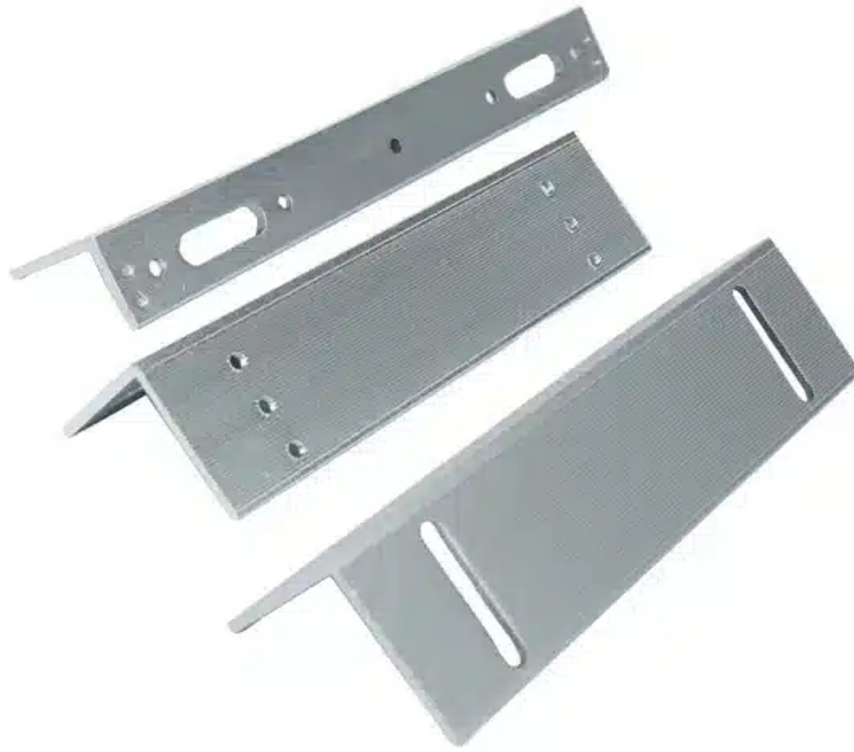


# Angle catch for mortise lock, lock cylinder with deadbolt SecureEntry-SC10

SKU: SecureEntry-SC10 | EAN: 5907614669065



**Product type:** angle catch for mortise lock, lock cylinder striker

**Material:** aluminum alloy

**Compatible lock type:** mortise lock with pull-out bolt

**Compatible locks:** standard, electric, and electromagnetic

## Angle catch for mortise lock, lock cylinder with deadbolt SecureEntry-SC10

Model	SecureEntry-SC10	Device type	latch clip for mortise lock, angled
Fabrication material	aluminum alloy	Application	mortise locks, ordinary and electronic
Product dimensions	25 x 2,85 x 4,95 cm, 18 x 5 x 5 cm	Dimensions with packaging	26,8 x 6,5 x 6,5 cm
Product weight	100 g	Weight with packaging	200 g

